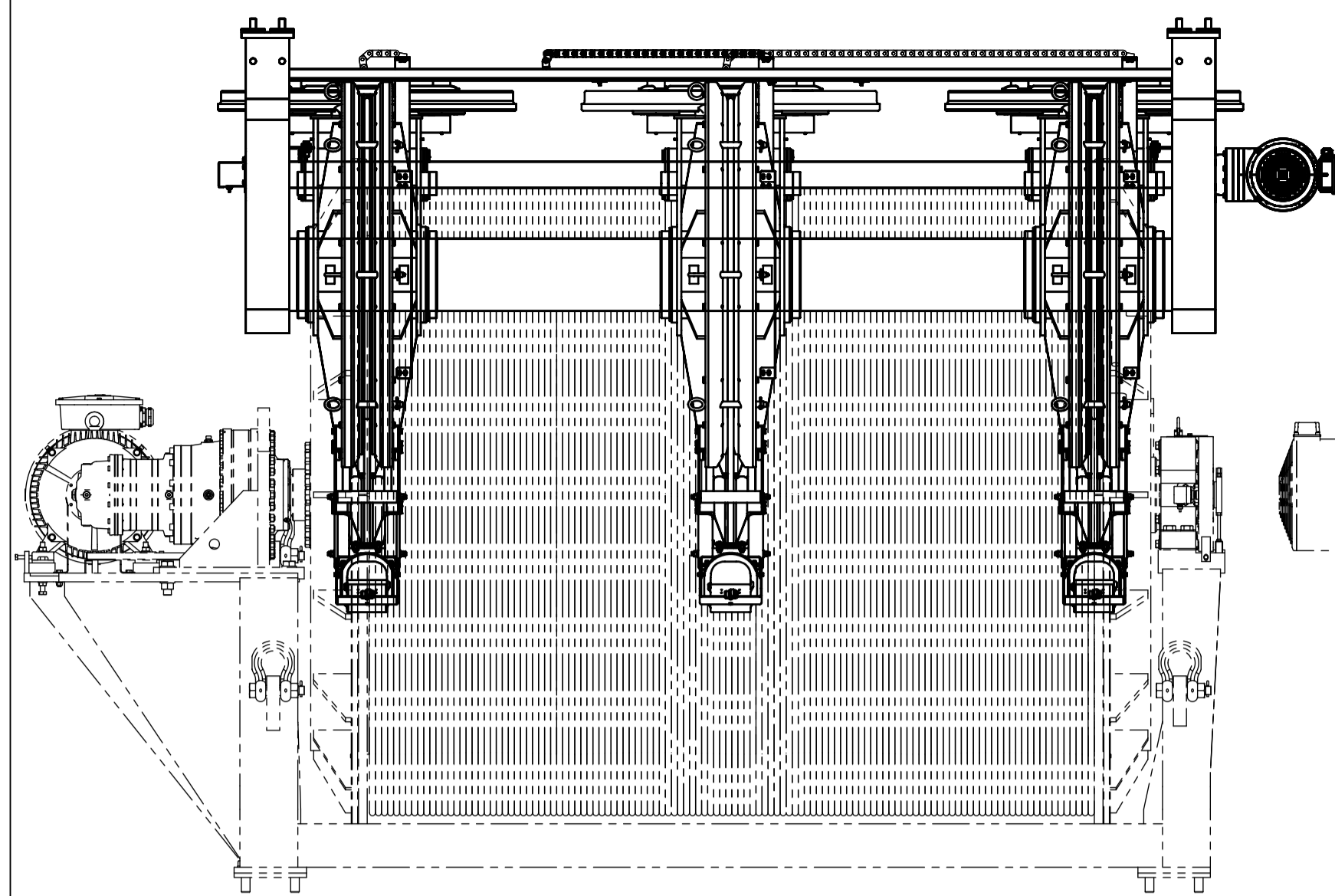
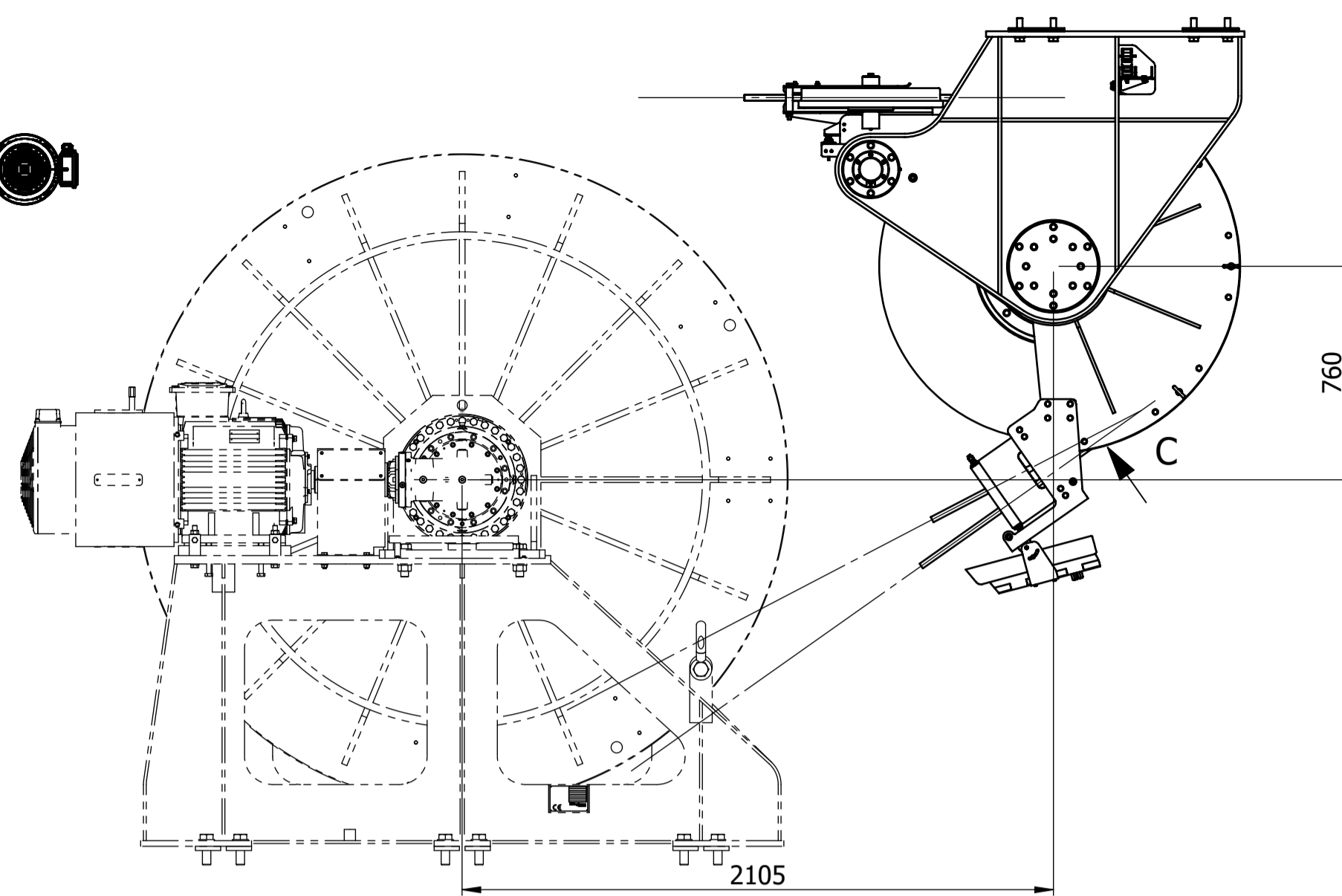


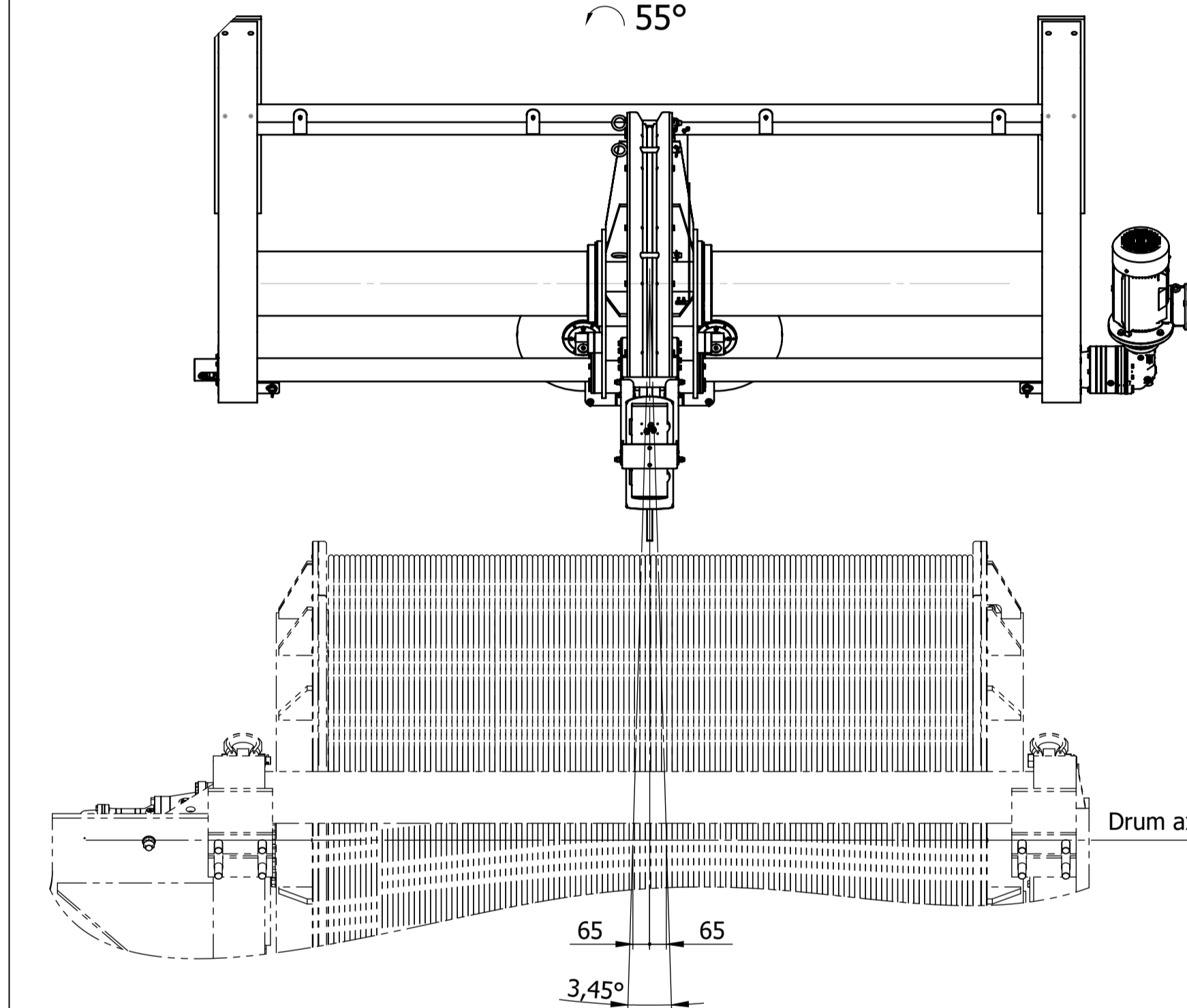
STARBOARD VIEW



REAR VIEW

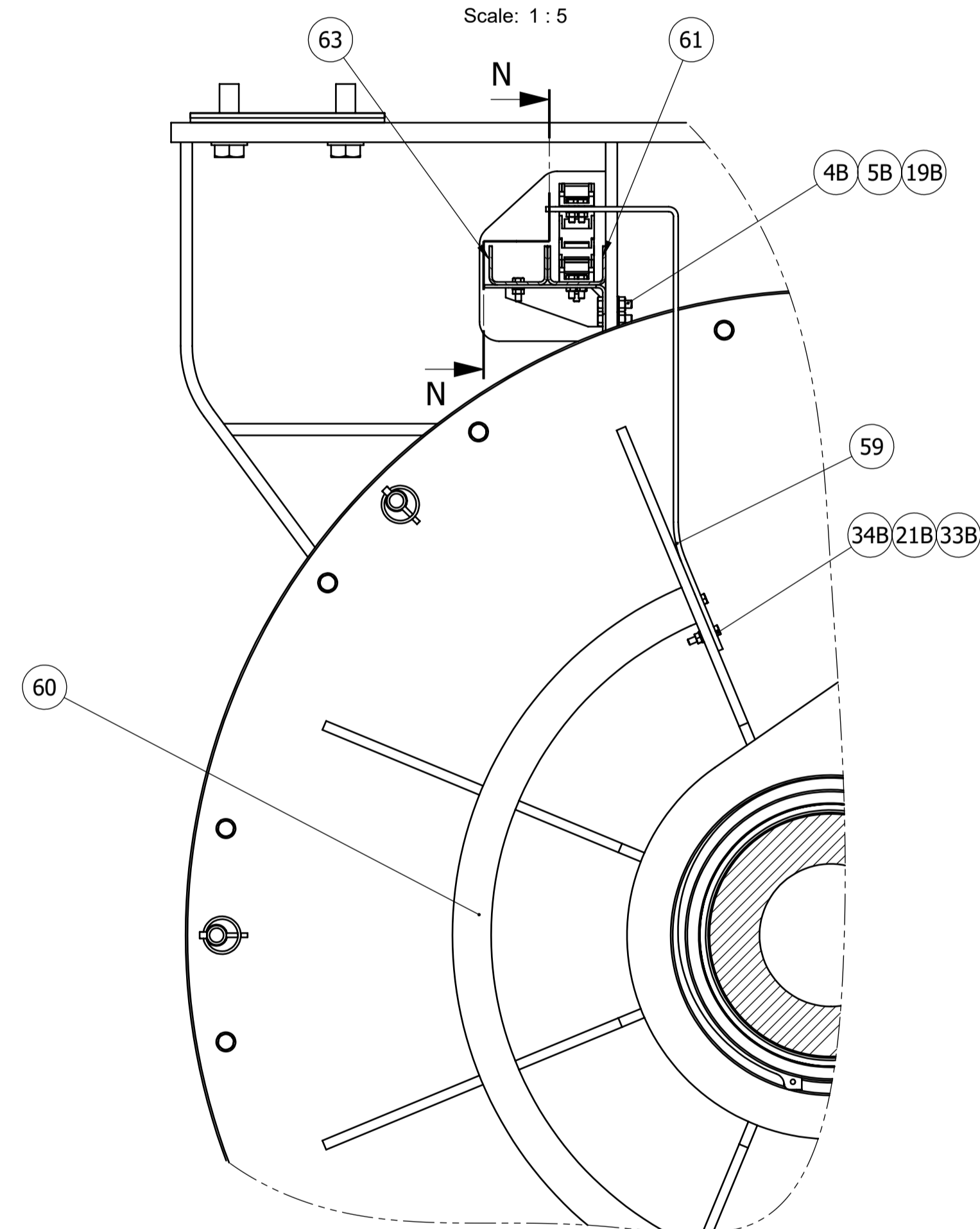


VIEW C
55°



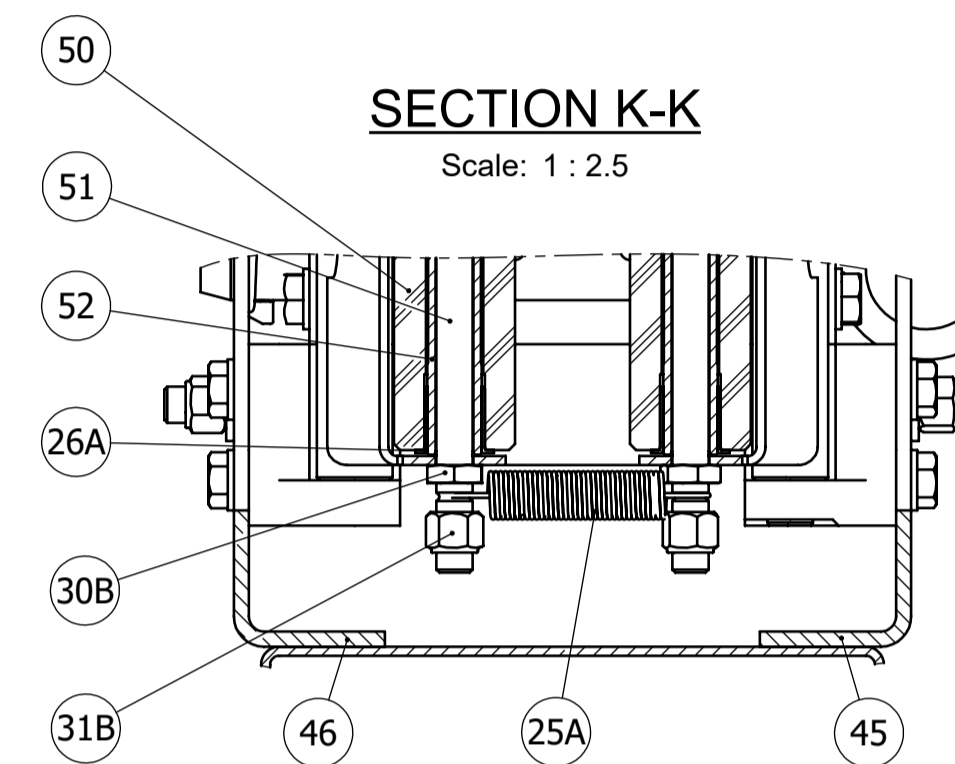
SECTION M-M

Scale: 1 : 5



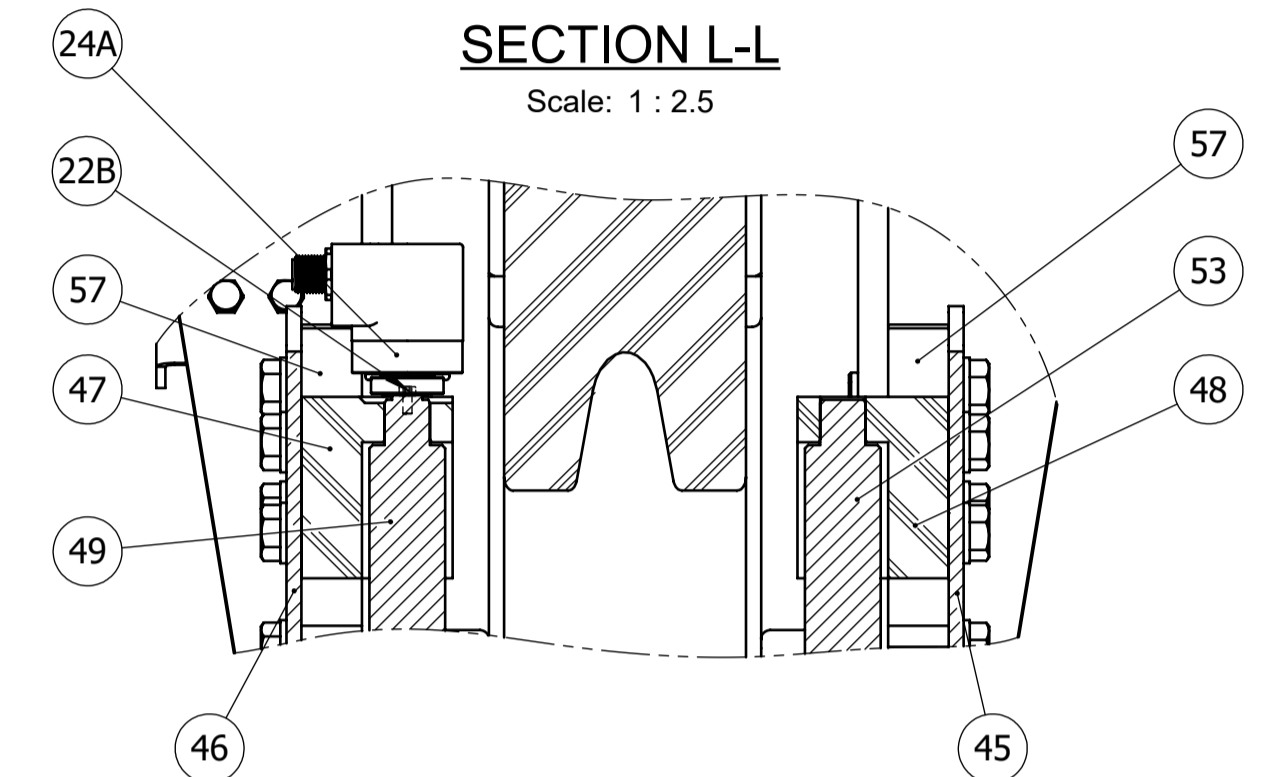
SECTION K-K

Scale: 1 : 2.5



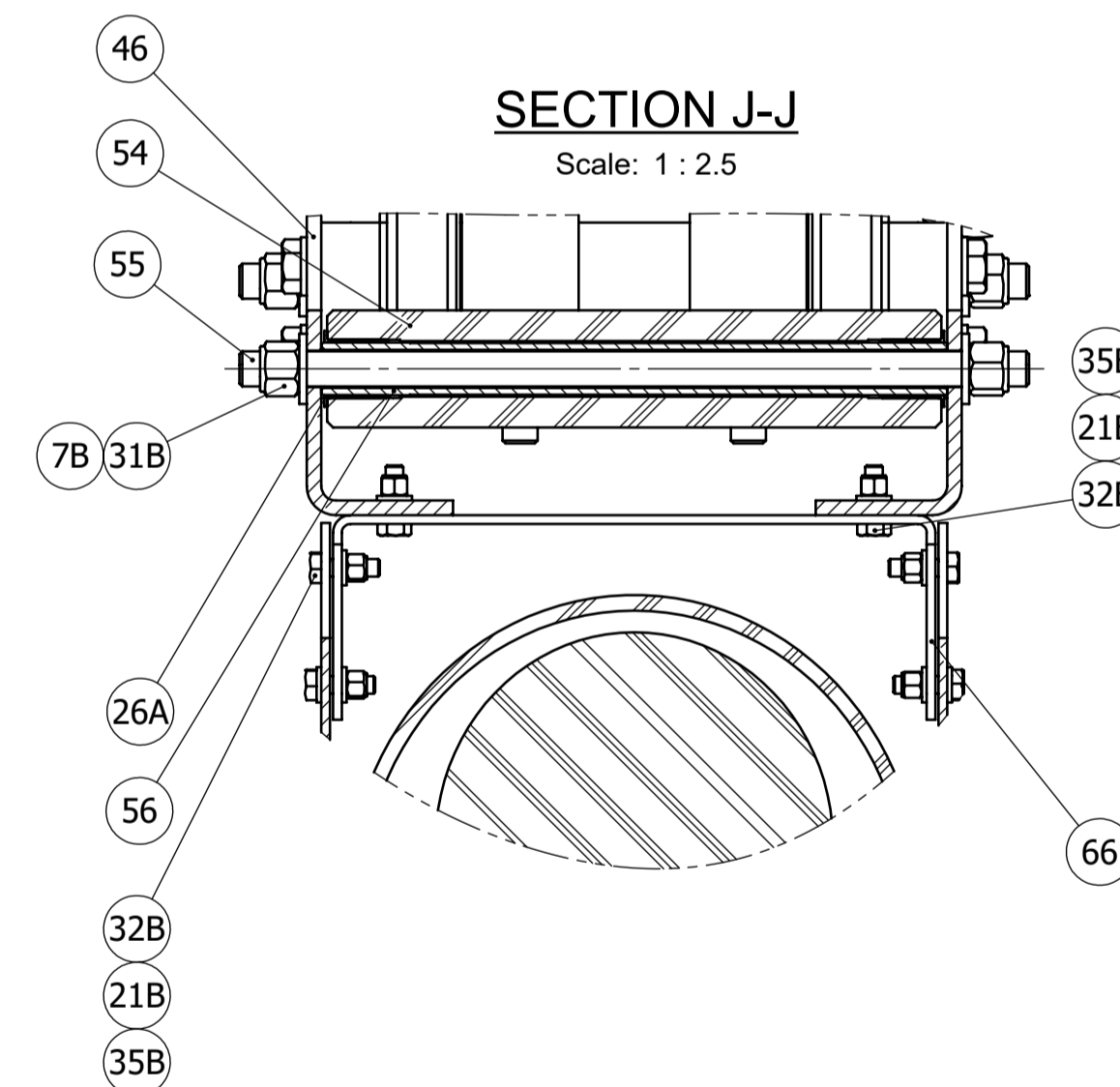
SECTION L-L

Scale: 1 : 2.5



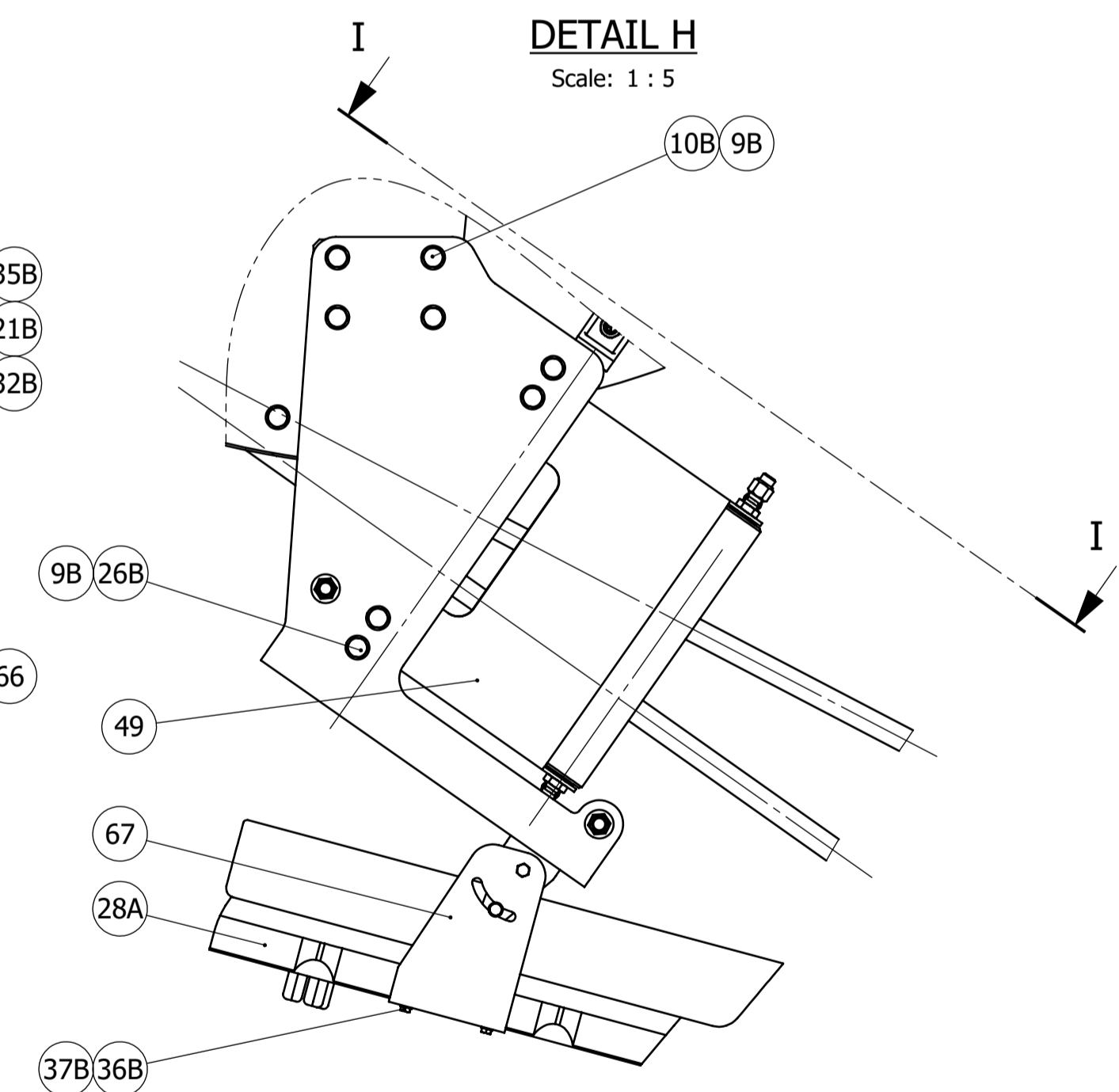
SECTION J-J

Scale: 1 : 2.5



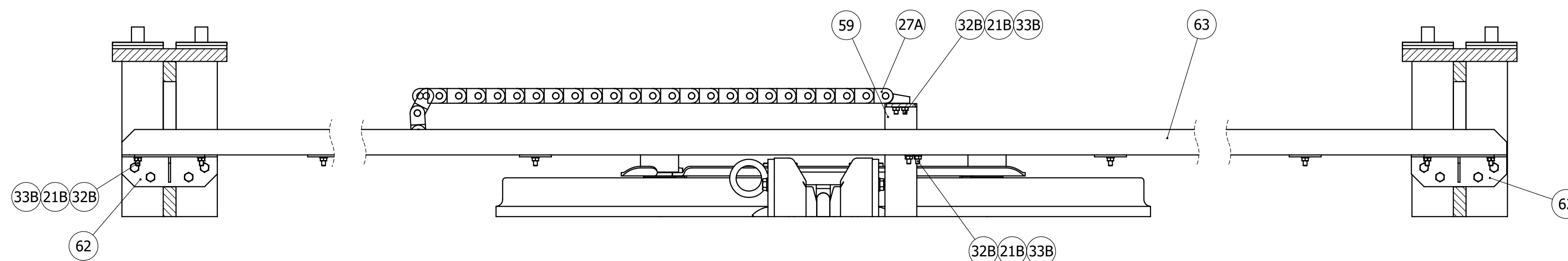
DETAIL H

Scale: 1 : 5



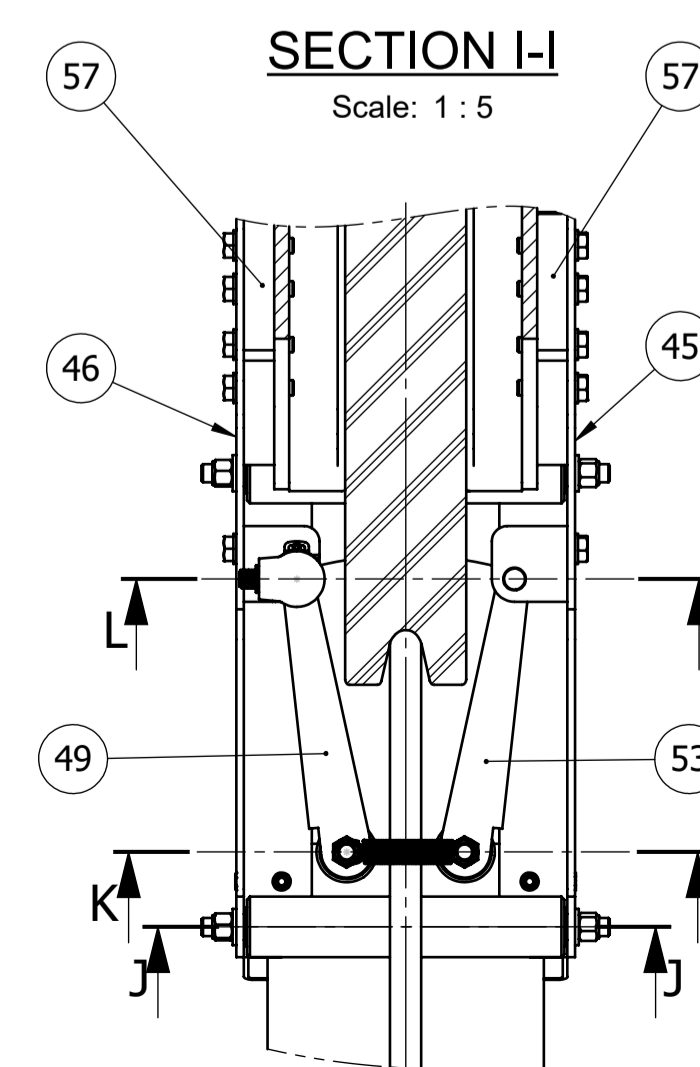
SECTION N-N

Scale: 1 : 5



SECTION I-I

Scale: 1 : 5



2	22/10/2024	Add & Modif camera & housing references Modif. of fixing dimensions items 6, 19	DCO	JLS	YBE
1	26/09/2024	Modif. items 2, 4, 9, 14 - 8B	DCO	JLS	YBE
0	30/08/2024	For construction	DCO	JLS	YBE
A	28/08/2024	First issue	DCO	-	-
REV.	DATE	MODIFICATION	AUTHOR	CHECKED	APPROVED

NOTICE : Information herein presented is confidential, proprietary information of KLEY-FRANCE. Any person accepting this information is required to accept the same in confidence, to agree to make no disclosure, use, or duplication thereof except as authorized by K-F and to return the



Kleyfrance
LIFTING SOLUTIONS

Immeuble Le Concorde
4, rue Jacques Daguerre
92500 RUEIL-MALMAISON (F)
TEL: +33 (0) 1.41.39.86.70
www.klevfrance.fr

	MODIFICATION	AUTHOR	CHECKED	APPROVED
PROJECT	57-IFR-23			
TITLE	Treuil Grand Fond N/O Pourquoi Pas ?			
	SPOOLING DEVICE			
	SPOOLING DEVICE FOR OMBICAL ROPE DRUM			
	Spooling device adjustment			

CUSTOMER REF: Jouvence du N/O « Pourquoi Pas » SHEET 2 OF 2